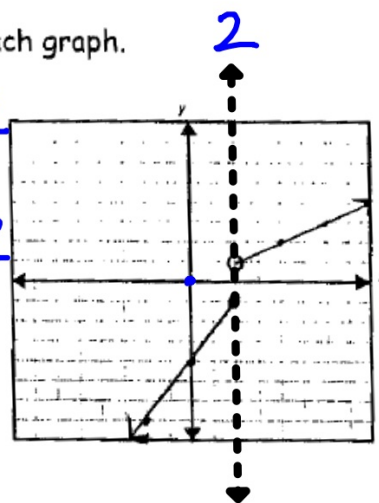


$$y = mx + b$$

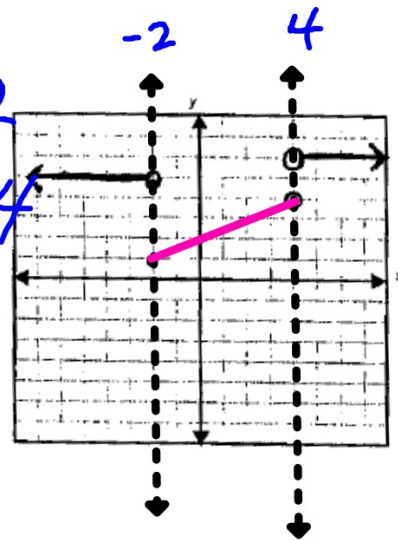
Slope y int.

Write the piecewise function represented by each graph.

$$1) f(x) = \begin{cases} \frac{3}{2}x - 4 & \text{if } x \leq 2 \\ \frac{1}{2}x & \text{if } x > 2 \end{cases}$$



$$2) f(x) = \begin{cases} 5 & \text{if } x < -2 \\ \frac{1}{2}x + 2 & \text{if } -2 \leq x < 4 \\ 6 & \text{if } x \geq 4 \end{cases}$$



$$3) f(x) = \begin{cases} -\frac{3}{2}x - 1 & \text{if } x < 2 \\ 2x - 1 & \text{if } x \geq 2 \end{cases}$$

